

PCAR Products



F1 Master/Slave Key Fobs

All New Design for Ferrari 355,360,456,550 and 575

Now with PIN Code Recovery!

User's Guide

Designed and Engineered by PCAR Products

Your *F1* fob is a modern redesign of the OEM Ferrari fob using state-of-the-art technology that offers improved reliability while retaining the familiar look, feel and functionality of the original. The alkaline battery and problematic terminals of the original design have been replaced with a durable lithium coin cell featuring a 10-yr shelf life and capacity for over 30,000 operations.

The *F1* is guaranteed to be fully compatible with the Ferrari 355,360,456,550 and 575 OEM fobs and is available in Master, Master + Slave and Master + 2 Slave sets in 315MHz and 433MHz frequencies. If not sure what frequency you need see note at end.



Take a moment to open the fob and jot down the serial number located on the back of the circuit board. If your *F1* is ever lost or damaged, you can use this number to order a replacement or look up its PIN. Keep the PIN code for your *F1* Master in a safe place.

USING YOUR *F1*

Before using it, you will need to program it to your immobilizer. To do this, you will need your car's 4-digit PIN code and follow the procedure in your Owner's Manual.



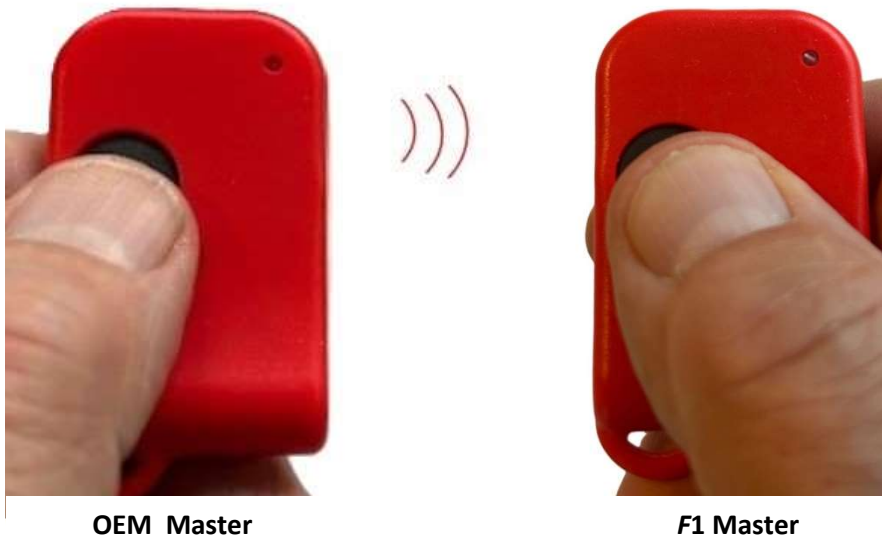
If you don't know your PIN code the *F1* Master can retrieve it from your Master in seconds.

If you don't know your PIN and *don't* have a Master to retrieve it from, consider the *F2* "Self-Programming" fob that doesn't need programming or PIN code.

BONUS FEATURE: PIN CODE RETRIEVAL

An exclusive feature of the *F1* Master is its ability to retrieve the PIN code from another Master. If you have a Master that's already paired to your car, it contains the PIN you need to program your *F1* Master and slaves. If you've lost it, here's the easy way to retrieve it with the *F1* Master:

- **Move out of range of the car**¹
- Hold your OEM Master fob in one hand and the *F1* Master in the other.
- Press and hold both buttons down until the *F1* LED starts flashing².
- Release both buttons
- When the flashing stops, count the number of LED flashes in each of the 4 groups that follow.
- Write the number down. This is your pin. (10 flashes = 0.)
- If you miss a count, repeat the procedure.



¹ If you do this close to the car you will set off the panic alarm. This is normal behavior when a fob is pressed for more than 3 seconds. If you do trigger the alarm, reset it by simply pressing the fob for an additional 3 seconds.

² Some aftermarket fobs automatically stop transmitting before retrieval completes. If you are retrieving the PIN from an aftermarket Master, press *F1* for at least 5 seconds *before* pressing the aftermarket Master, then continue holding both down until the *F1* flashes.

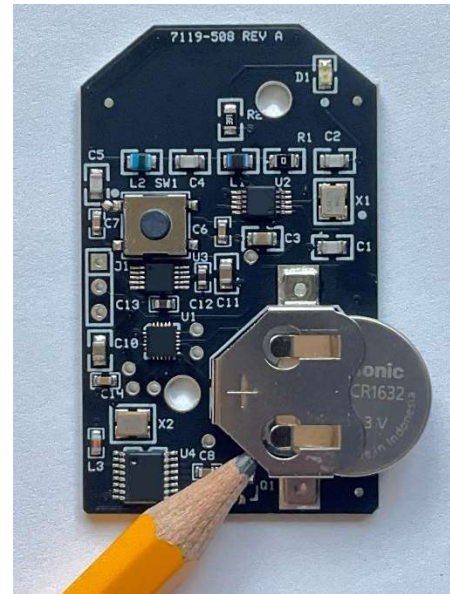
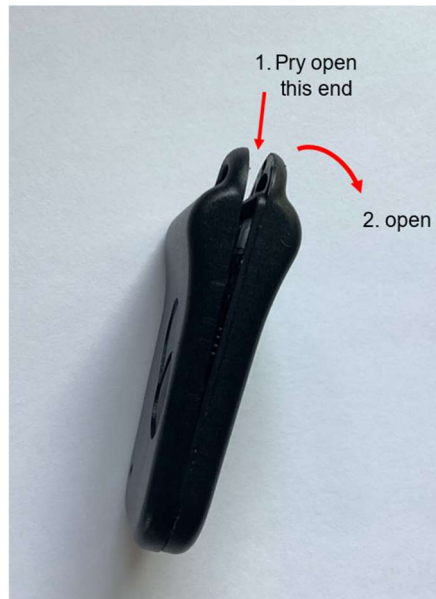
The *F1* comes in a housing identical to the OEM housing:



BATTERY SERVICING

The F1 uses a standard CR1632 lithium coin cell. The one provided has a 10-year shelf- life and a capacity for over 30,000 operations. When replacing, use only high-quality batteries from reputable sources such as Panasonic, Toshiba, Murata, or Energizer, as quality of lesser-known brands can vary significantly.

To replace the battery, remove the small Phillips screw on the back of the case, and carefully pry it open at the key ring end as illustrated.



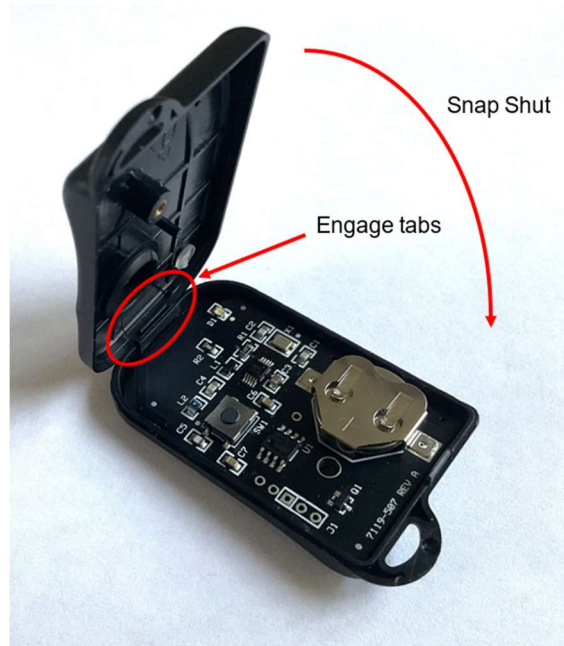
Remove the board from the case and push the old battery out from the side. Avoid contacting electrical components. (This is a good time to inspect the battery contacts and clean if necessary). Install the new battery + side UP.



CAUTION

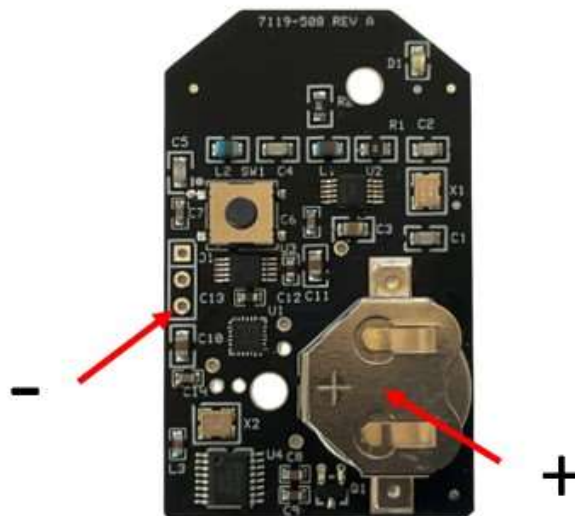
Installing the battery upside down will short it out and reduce its capacity. While the battery may still function, we recommend replacing any battery that has been installed backwards to ensure maximum longevity.

Before closing the case, press the button and make sure the LED illuminates. If OK, close the case by engaging the tabs as shown, then rotate the cover down, snap it shut and re-install the screw.



If the LED doesn't illuminate, double-check that the battery is installed "+" side up and make sure the voltage is above the required minimum of 1.8v. Use a digital voltmeter to probe the fob as shown below.

Due to the discharge characteristics of lithium coin cells, it is imperative that you measure voltage with the button pressed.



FOB Range

Owners often ask, "How far away will my F1 work?" It's a difficult question to answer because range depends on many factors – the fob, the immobilizer, the surrounding environment, how the fob is held, orientation relative to the vehicle, condition of the battery, etc.

A more meaningful question is, "How does the F1 range compare to my current fob?" Feedback from users show that in side-by-side comparisons, *the F1 generally operates at a greater distance than OEM fobs* and up to four times the distance of competing aftermarket fobs. We'd love to hear your results.

TROUBLESHOOTING

Q: When I tried to retrieve the PIN code from my OEM Master, the F1's LED stayed on and never flashed.

A: Possible reasons:

1. Your OEM Master may be transmitting a weak signal. Make sure your Master fob locks and unlocks the car. If the car doesn't respond, the F1 won't either. Check the OEM Master's battery and make sure the fob contacts are clean.
2. Your Master may be transmitting at a different frequency than the F1 Master. Make sure the F1 Master matches the frequency of your OEM Master.

Q: When I tried to retrieve the PIN code from my OEM Master, the F1's LED flashed 5 times but instead of displaying the PIN, flashed only 1 time.

A: The F1 has already retrieved the PIN from another Master. It will not retrieve another.

Q: When I tried to retrieve the PIN code from my OEM Master, the F1's LED flashed 5 times, then went out.

A: The fob you are trying to retrieve the PIN from is not a Ferrari Master. Fob cases and boards occasionally get swapped. A red case is no guarantee that a fob is a Master.

Q: How can I tell if my OEM Master is actually a Master?

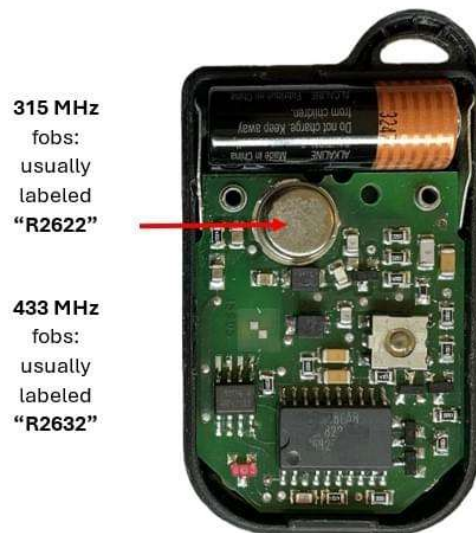
A: Unfortunately, there is no way to tell from its appearance.

Q: When I retrieved the PIN code, why did the car alarm go off?

A: This is the normal, factory "Panic Function". It's triggered when a fob is pressed for more than 3 seconds to indicate the owner is in danger. To prevent this, retrieve your PIN away from the car. If the alarm does go off, reset it by pressing your fob for another 3 seconds.

WHAT FREQUENCY DO I NEED?

North American market vehicles all use 315MHz fobs. Most other countries use 433Mhz. Check the label on the back of your fob. If it says "RK116" or "RKY116" you have a 315MHz system. If it says "RK114" or "RKY114" you have a 433MHz system. If your fob doesn't have a label, open the case and look at the label on the small metal can. On 315MHz fobs it will normally be labeled "R2622". On 433MHz fobs it will normally be labeled "R2632". If you have any questions, let us know.



Determining fob frequency

WHICH F1 SET SHOULD I ORDER?

When you program fobs you always have to program THREE fobs: 1 Master and 2 slaves. You can reuse any slaves you have but you cannot re-use your current master. What you need to order depends on what you have:

If you have....	F1 set to order
1 Master only	3-fob set
1 Slave only	2 fob set
1 Master + 1 slave only	2 fob set
2 Slaves only	1 Master

FAQs

Q: Which Ferraris are the *F1*'s compatible with?

A: The *F1* is backwards compatible with all Ferrari 355, 360, 456, 550 and 575 models.

Q: Can I retrieve the PIN code from an aftermarket Master?

A: Yes. Any Ferrari-compatible Master fob for the above models can have its PIN retrieved by the *F1* Master as long as it's the same frequency. (See Note 2 under PIN Code Retrieval section)

Q: After I retrieve the PIN from my OEM Master, can I retrieve the PIN from another Master?

A: No. The *F1* Master is designed to only retrieve the PIN code from a single Master. You can retrieve the PIN code from the same Master as many times as you like by repeating the procedure.

Q: Why do I need the PIN code from my current Master?

A: You need that PIN to program your new *F1*'s.

Q: Can I mix *F1*'s and with other Ferrari-compatible fobs or must they all be one type?

A: You can mix and match. For example, if you currently have 2 OEM slaves, you can program those and an *F1* Master to make a complete set. Remember: you always have to program THREE fobs: a new Master + 2 slaves or the procedure will abort.

Q: What do I do with the PIN that came with my *F1* Master?

A: Put it in a safe place. After you program the *F1* Master that is your new PIN code. You will need it to program fobs or emergency start your car. The old PIN will no longer work.

Q: What if I lose my *F1*'s PIN code?

A: Contact us. We can look up your PIN code if you give us the serial number on the back of the circuit board.

Questions? Drop us a line at: support@EZIMMOBLOCK.com, or call: 860-271-1826